



The **THERMALWELD[®]** *Collection*
PLUS

VINYL WINDOWS



POLARISWINDOWS.COM

ENERGY EFFICIENCY

Ease of Operation + Ownership

Welded Frame & Sash Corners



Fusion welded frame and sash corners are strong and free from gaps.

Integrated Extruded Pull Rails are part of sash extrusions, not added later.

Heavy Duty Cam-Style Locks & Keepers secure and air-tight seal



Satin nickel, brass and aged bronze finishes available*



energySMART® Insulated Glass

Standard Patented Roller Tilt® ¾" Constant Force Balance System: Springs travel with the sash. This allows the sash to operate with significantly less friction and noise.

Sash Limit Locks limit sash travel secure partial opening

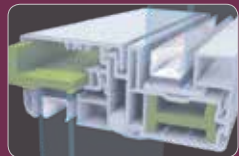


double hung

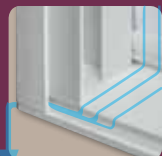


glider

Continuous Over / Under Interlock & Weather-Stripping prevent air infiltration across entire meeting rail



Innergy™ at meeting rails*



True sloped sill for positive water drain off, no weep holes to clog

*options



Benefits of Our Window

Our extrusions are fusion welded at every corner to create seamless and strong windows.

Maintenance Free

The vinyl formulation maintains its color and smooth surface.

Multi-Chamber Extrusions

Interior walls add strength. These walls and air chambers between further improve insulating properties.

Double Hung

Recessed tilt latches allow both sash to tilt in completely for easy cleaning.

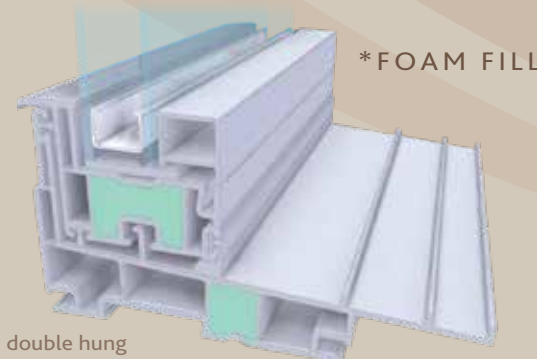


Windows that qualify as Most Efficient are windows with the Ultimate² and Ultimate Plus² glass packages. Ask your sales rep for more information.



Casement

Sash cranks fold into base for a clean look. Sash opens fully with just a few turns. These windows are triple sealed against the weather and can be safely cleaned inside the home. Hinged side of sash slides away from frame when fully opened.



*FOAM FILL

double hung



Gliders 2+3 Lite

- Sash lift out from inside for easy cleaning.
- 2 lite - half screen
- 3 lite - active panel screen[s]

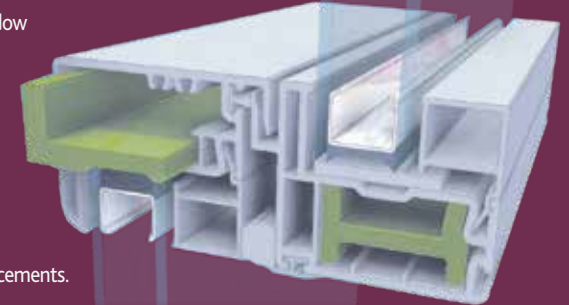
Exterior Paint* 20 Year Warranty

Against fading, peeling or blistering

Unique, high-performance exterior coating specially formulated for PVC
Semi gloss finish • Color matched contour internal grids, caulk & coil‡*
Painted screen frames • Crack & impact resistant • Touch-up paint included
AAMA testing ensures that coating resists strong solvents, heat gain and thermal shock.
Lead time 4-6 weeks ‡Muntin color may be affected by glass coatings, such as Low-E. Coil not exact match *Options
Colors shown are reproduced by mechanical process and may vary from actual colors of product. Use actual color selector.

*Innergy®

- Innergy is the innovative, energy-efficient alternative to aluminum.
- Rigid Thermal Reinforcements are advanced fiberglass reinforced resin inserts, designed to slide easily into window chambers for greater support and insulation.
- Better Thermal Performance
Up to 700 times better than aluminum in material-to-material comparisons.
- Better Thermal Break
Impervious to cold or heat.
- Better protection against condensation
Helps prevent staining that can occur with metal reinforcements.
- Better flexibility
Will not permanently set when impacted.



The name and logo of Deceuninck NV, of its affiliated companies and the products and services manufactured by them, are trademarks protected by national and international laws. Innergy is a registered trademark of Deceuninck North America. The color GREEN is a trademark of Deceuninck North America LLC.

*BetterVUE®



BetterVUE® Screen Mesh

- Better Insect Screen
- 10% Better Insect Protection
- 20% Better Airflow
- 20% Clearer View

Standard



Standard Screen Mesh

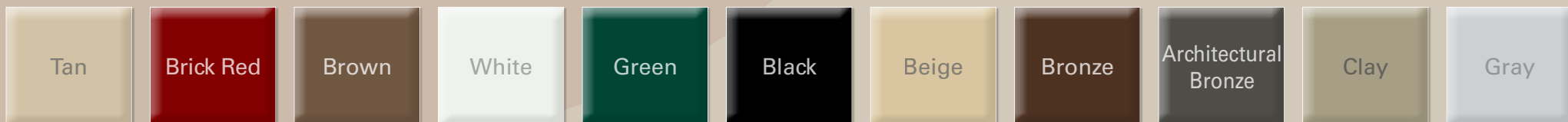
- Sight more obstructed
- Less Airflow than BetterVue Screens
- Proven and Reliable

Screen

- Strong, extruded aluminum frame in white or tan
- Half screen Standard
- Aluminum Screen Mesh*
- Available in Pet Screen* and Full Screen*

*options

Ask for a ThermalWeld Plus®
Patio Door brochure



DECORATIVE GLASS*

designs



colonial



prairie style



double prairie style



diamond n/acontour or brasses

PLATED LOCK FINISHES*



antique brass



satin nickel



bright brass



aged bronze



internal muntin styles



smooth



contour



antique brass

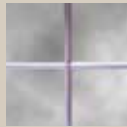


satin nickel



slim line brass

view glass 3/8" v-groove, interior surface of glass unit pane



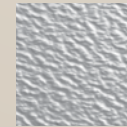
view



floral view



elongated floral view



obscure



glue chip



rain glass

MINIBLINDS*



white



alabaster



tan



silver



gold

Please refer to actual color samples for true product representation.

COLORS*

vinyl



white

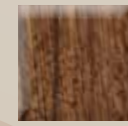


tan

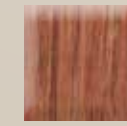
interior woodgrain



medium oak



cherry



vintage pecan



coppertone hardware standard on woodgrains

RESEARCH & DEVELOPMENT

Polaris products are scrutinized under extreme weather and structural stresses at the Polaris in-factory testing facility. Our R&D Department ensures that our products feature the latest industry innovations. Top quality and integrity are guaranteed.

MORE GLASS OPTIONS

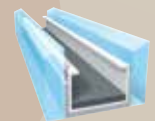
Krypton fill

Bronze or Gray tint

ENERGY EFFICIENT GLASS

energySMART®glass is standard in every Polaris®window. These insulated glass (IG) units are panes of glass sealed onto the Intercept® U-shaped steel spacer. Together, the spacer and sealant block temperature transfer and reduce condensation.

We also offer many high-performance energySMART upgrades. Low-E coating reduces ultra violet light damage and heat gain. Triple pane IG units have sound deadening properties. Argon or krypton gas fill between panes further reduces temperature transfer. Ask about ENERGY STAR qualified upgrades.



Ask About Our Glass Breakage Warranty



©ThermalWeld Plus® and energySMART® are registered trademarks of Polaris® Windows & Doors OH, USA 2019. All other trademarks are property of their respective owners. Stock Photography is used in this brochure. These photographs are not exact replicas of Polaris® Windows & Doors products.

*options